

## Shapes, stamped pieces

Our shapes and stamped pieces are used in a variety of applications in following industries:

automotive, healthcare, industrial appliance, household appliance

### Product Features

#### Shapes, stamped pieces

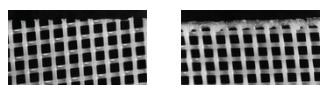
Stamped pieces are convenient for insert molding and are made from Sefar fabrics by a cold, laser or ultrasonic stamping process.

Using state-of-the-art laser and ultrasonic punching equipment, SEFAR MEDIFAB® and SEFAR MEDITEX® solutions can be tailored to virtually any shape or dimension. Laser cut parts can be produced in multiple layers. The high-precision laser cut parts are characterized by high edge quality. Laser cutting allows for elaborate shapes to be cut that are specific to the customer's design needs. Small parts can be produced on dispenser tape. This guarantees a high quality during transport and storage and often also simplifies further processing (e.g. pick and place)



### DOWNLOADS

### Product forms



#### Referenzen



- Cold stamping is the most economical process and provides standard-tolerance pieces with edges that are not sealed. Cold stamping is possible for all fabrics. Piece dimensions range up to 1000 x 1000 mm
- Laser stamping provides a heat-sealed edge. Maximum dimensions are 480 x 480 mm

#### Sefar Inc.

111 Calumet Street  
Buffalo, NY 14043 – USA

Phone 800 995 0531

[sales.us@sefar.com](mailto:sales.us@sefar.com)

[Go to product page](#)

- Ultrasonic stamping is available for fabrics having mesh openings < 400 µm. It ensures tight tolerances and provides high-quality sealed edges which do not fray
- Stamped discs with a diameter range of 6 to 95 mm are possible. Multilayer pieces are possible

## Packaging / Labeling



- Stamped pieces are packed into sealed PE bags
- Stamped pieces made of SEFAR MEDIFAB fabrics are double bagged
- The label contains the following standard information:  
manufacturer, material, outer dimensions, manufacturing date, order number, batch number
- If it is packed according to medical standards (double-layer packaging), the label is attached to the inner bag

## Your Benefits

### Sefar Inc.

111 Calumet Street  
Buffalo, NY 14043 – USA

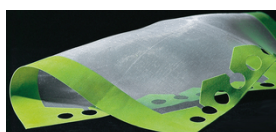
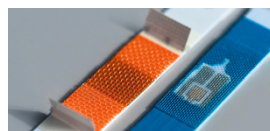
Phone 800 995 0531

[sales.us@sefar.com](mailto:sales.us@sefar.com)

[Go to product page](#)

- Almost unlimited range of shapes (various technologies)
- Suited for healthcare applications (SEFAR MEDIFAB, double bag)
- Traceability (label)
- Non-fraying edges (depending on selected technology)

For industry/application specific use please see links below:



For further information and fabric samples, please select the preferred contact option on the right.

## Locations



### Sefar BDH Inc.

200 rue Clement Gilbert  
Saguenay QC, G7H 5B1 – Canada  
Phone: +1 418 690 0888  
Fax: +1 418 690 9499

■ E-Mail

### Sefar Inc.

111 Calumet Street  
Buffalo, NY 14043 – USA

Phone 800 995 0531

[sales.us@sefar.com](mailto:sales.us@sefar.com)

[Go to product page](#)



## Sefar Inc.

Kansas City, MO – USA

Phone: 800 995 0531

Fax: +1 816 452 2183

[E-Mail](#)



## Sefar Inc.

Los Angeles, CA – USA

Phone: 800 995 0531

Fax: +1 909 544 5901

[E-Mail](#)



## Sefar Inc.

Gray, GA – USA

Phone: 800 995 0531

Fax: +1 478 986 6953

[E-Mail](#)



## Sefar Inc.

111 Calumet Street

Buffalo, NY 14043 – USA

Phone: 800 995 0531

Fax:

[E-Mail](#)

## Sefar Inc.

111 Calumet Street  
Buffalo, NY 14043 – USA

Phone 800 995 0531

[sales.us@sefar.com](mailto:sales.us@sefar.com)

[Go to product page](#)